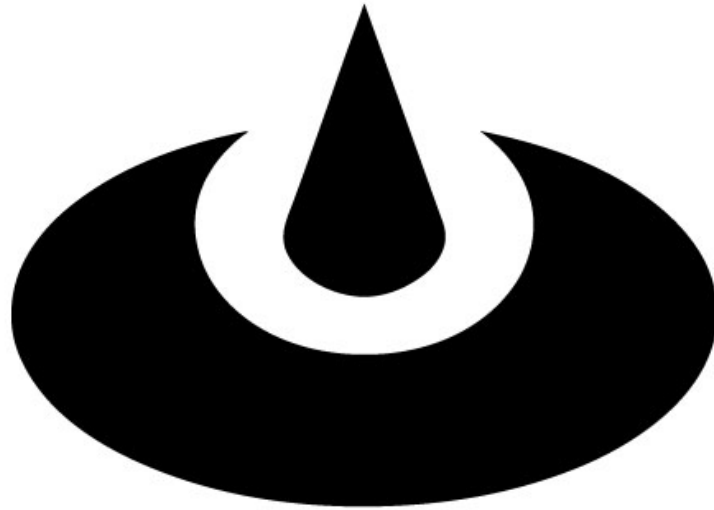


Users Manual Version 8.3



StingTM
SURVEILLANCE

We'll be watching you...

**Thank you for choosing Sting
ST-400, ST-800, ST-1600**



Users Manual Version 8.3

Please read this manual before using this product.

Important considerations

- The sting monitoring software has been designed and tested to run as a standalone application. Installing and running other software/hardware on this machine may cause unexpected and/or undesired results including but not limited to loss of recording capability and recorded events.
- Increasing the recording resolution of one or more cameras can substantially decrease the available recording time of your DVR. A DVR that can record 15 days at its normal resolution may only record 5 days with all cameras in their highest resolution.
- Your Sting DVR by default is set to only record when there is motion in front of the camera. Trees swaying in the breeze or a busy highway in the background can reduce the available recording time. Reorient the cameras or use the blocking features of your DVR to maximize the recording time.
- While Sting is available to assist you in backing up an event for law enforcement or for internal use, we cannot be responsible for missed events.



Users Manual Version 8.3

Basic Operation

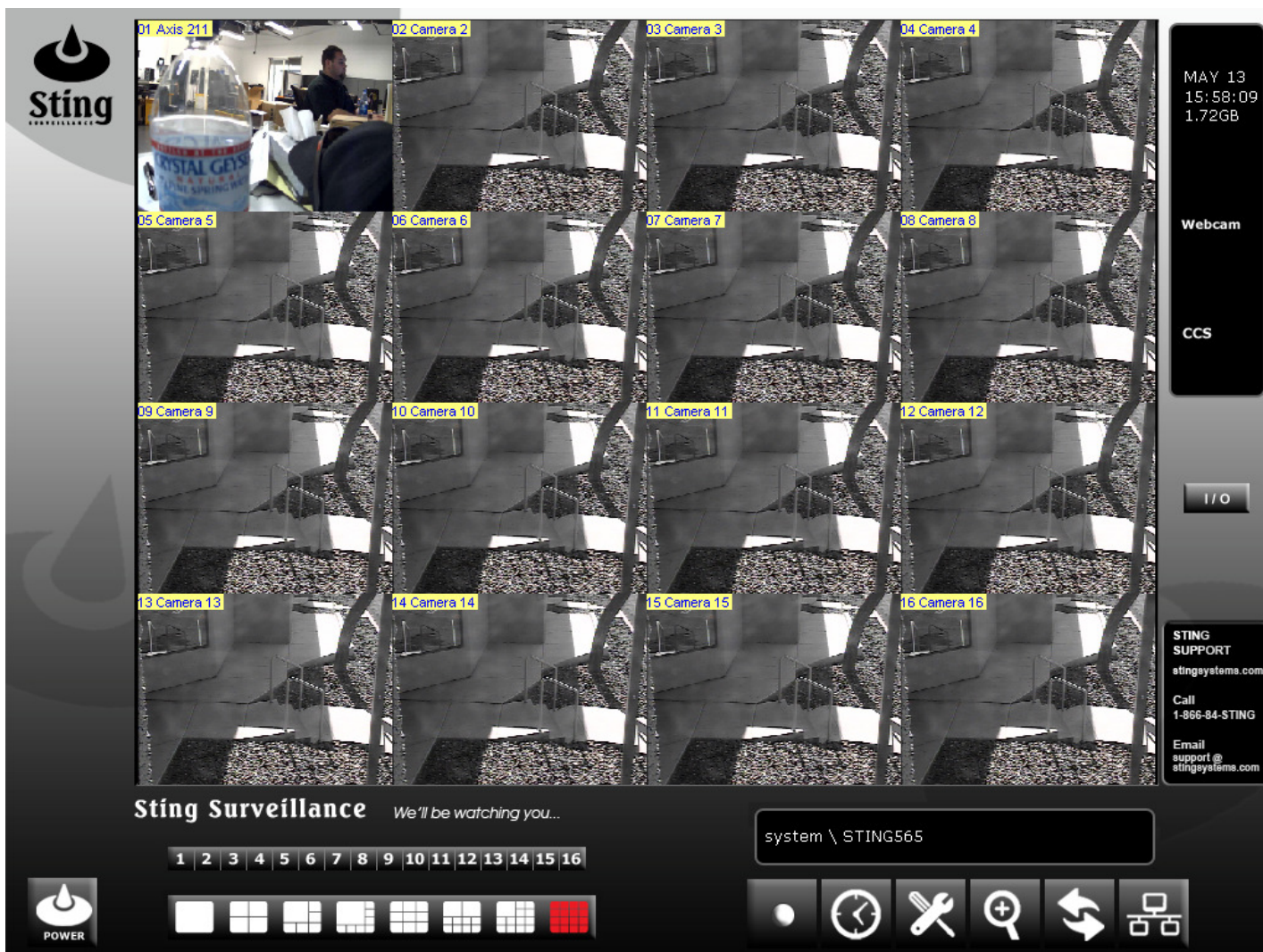
Startup

This system has been configured to start up, and begin monitoring on its own. **Figure 1** shows how the system will look right after startup. Your screen may appear different depending on the number of cameras supported and your preference for the layout.

(Note: Once per week your system will restart itself to ensure reliable recording. The time of this restart can be configured, but by default will occur between 6 and 7 am once every 7 days.)

In the next section, we will discuss the controls and features of this screen.

Figure 1





Users Manual Version 8.3











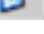
Keylock





To ensure that only authorized users can review/record events Sting has implemented a Keylock system. To access the system move the mouse just off the bottom of the screen and the following menu bar (**Figure 2**) will appear.

Figure 2



 - Standard system tools

 Multicam Surveillance System	- Start Monitoring
 Video Log	- Playback an event
 Backup System	- Save event for viewing or prep for burning
 Repair DataBase Utility	- System Utilities
 Remote Playback Server	- Allow Remote Playback
 eMap Editor	- Manage your cameras via eMap
 Control Center Service	- Starts Control Center Service
 Hot Swap HDD Tool	- Manage Optional Hot swap of disk drives
 Burn a CD	- Record backed up events to CD or DVD
 Sting Event Viewer	- View System Events
 Sting Display Settings	- View Display Properties

-  - Keylock *Requires privilege
 - Manages the Keylock system
-  - Restart *Requires privilege
 - Restarts the system
-  - Shutdown *Requires privilege
 - Stops the system without a restart
-  - Task Manager
 - Shows programs that are running on your system



Users Manual Version 8.3

Monitoring Controls and Features -

Figure 3 shows an exploded view of the monitor screen. A more detailed description follows.



Camera Select – Choose one camera to fill the viewing area. The camera number corresponds to the physical camera connection to the back of the DVR

Date/Time/Disk –

Date/Time - Displays the current date and time that will be associated with images recorded on your DVR.

Disk - If your system is configured to recycle disk space the amount of space available will decrease to about 1 GB and then remain there. This means that your oldest files are being reused

I/O – Optional feature allows input from POS devices and from Alarm Systems. The I/O feature also allows output to an alarm system (for example when motion is detected).

Layout Select – Click on one of these buttons to watch one, two or more of your cameras up to sixteen at one time.

PTZ – Optional feature allows control of Pan Tilt and Zoom (PTZ) capable devices. This may require additional cabling.



Users Manual Version 8.3

Start/Stop - Click here to login to change system settings or to shut down the system. Only authorized users can perform a normal shutdown of the system.

System/User - Shows the user currently logged in or if no users are logged in the name of the system is displayed.

Tools - These commands will be covered in detail later in this document and are in general for use by an authorized user. If you choose a tool a box will appear that will show your options. If an option is grayed out you do not have proper authority to use the function.



- Start and stop monitoring on one or more cameras



- Schedule when an area will or will not be monitored



- Setup the defaults for the DVR and other advanced configurations



- Playback recorded video



- If you would like to have a large viewing area and watch the cameras one at a time then click on will continue to record regardless of the current view on this option. Note all cameras will continue to record regardless of the current view on the console



- Controls how this DVR is allowed to connect to other devices.

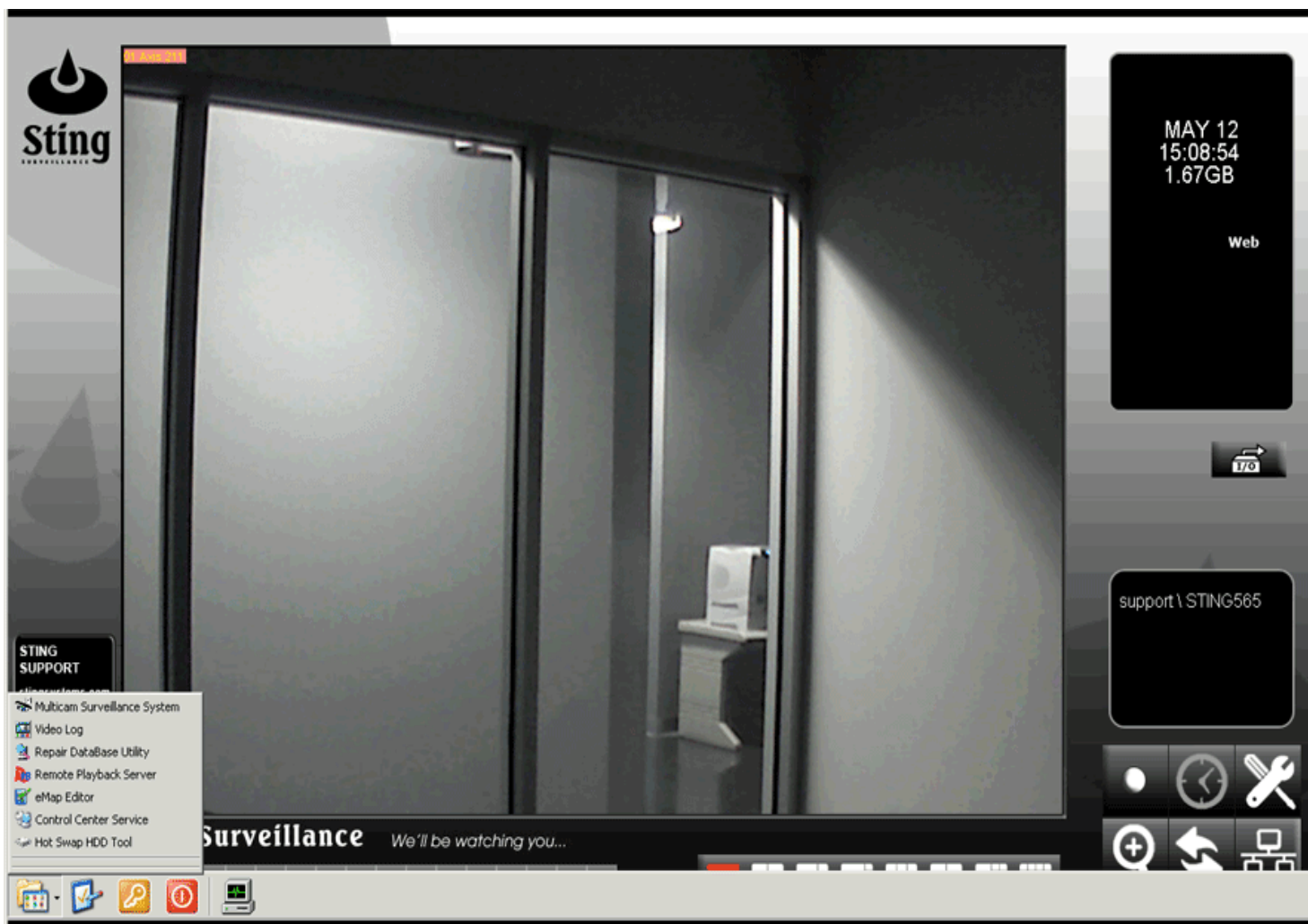
Viewing Area - In this area you can watch one or all of your cameras. You select the layout by choosing one of the buttons in the viewing layout area. The camera name and number are displayed in the upper left hand corner of each view. If the camera name is flashing, this indicates that the image on the screen is being recorded.



Users Manual Version 8.3

Playback Controls and Features

The playback functions allow you to review previously recorded events. There is no impact to recording while playback is in progress. There are multiple ways to enter the playback mode. The first method is to move the mouse to the bottom of the screen and the “Keylock” menu will appear as shown below. Click on the first icon (File Folder) and the menu below will appear.

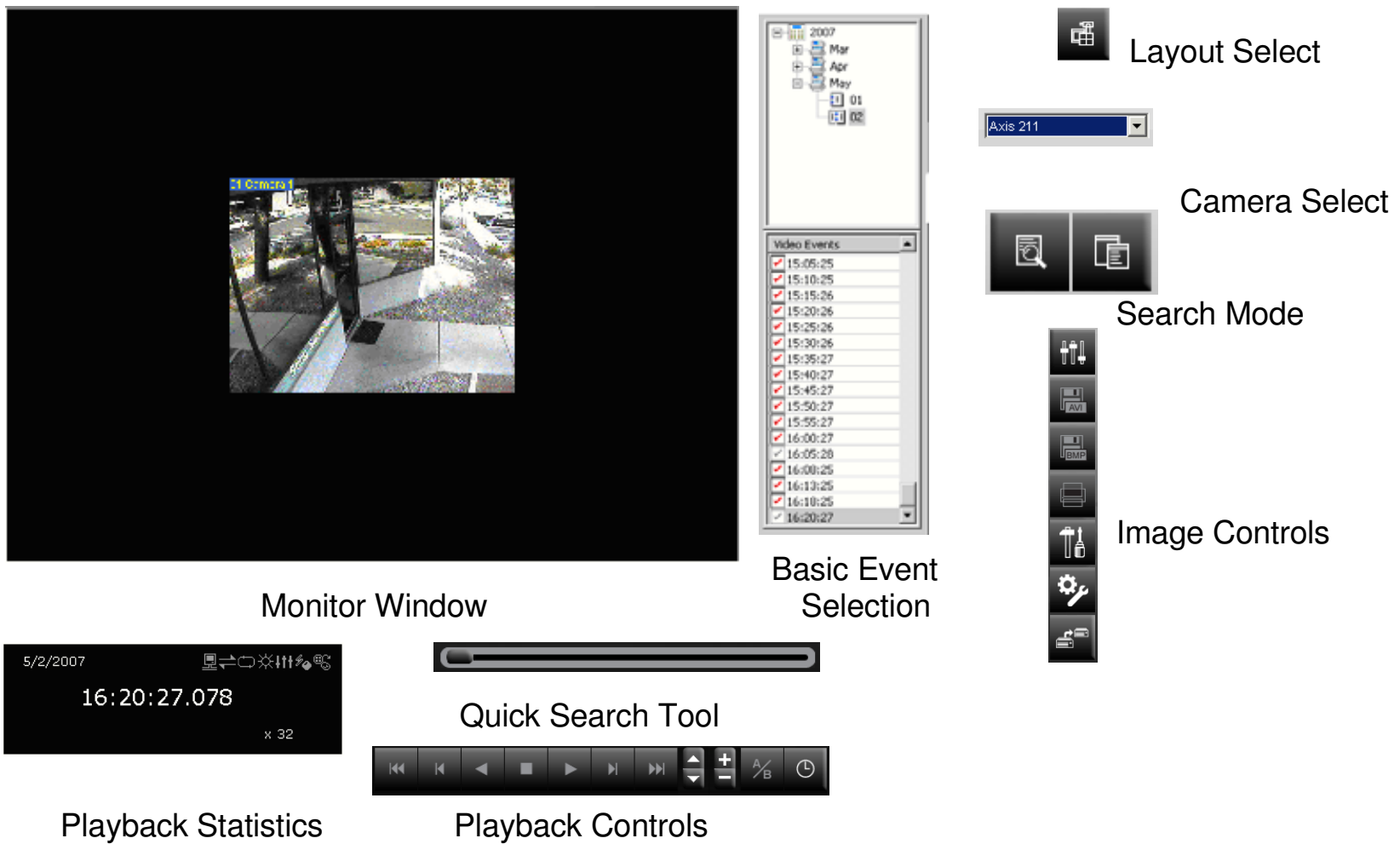


Click on  Video Log and the playback window will appear



Users Manual Version 8.3

The following figures show an exploded view of the playback screen.



- Monitor Window** – View one or more camera views as set by the Layout Select
- Layout Select** – Choose how the views will be displayed in the monitor window
- Camera Select** – Choose one camera to appear in the monitor window
- Search Mode** - Normal (Basic) or Advanced (Select a date and time range)
- Event Selection** – Choose an event by date (Basic/Normal), Advanced will be discussed later.
- Playback Controls** –

- Reverse Play/Pause
- Play/Pause
- Stop
- Jump to beginning
- Move one frame backward
- Move one frame forward
- Jump to end
- Increase playback speed
- Reduce playback speed
- Zoom in (Click on tool, then click on the image you would like to zoom)
- Zoom out (Click on tool, then click on the image you would like to zoom)

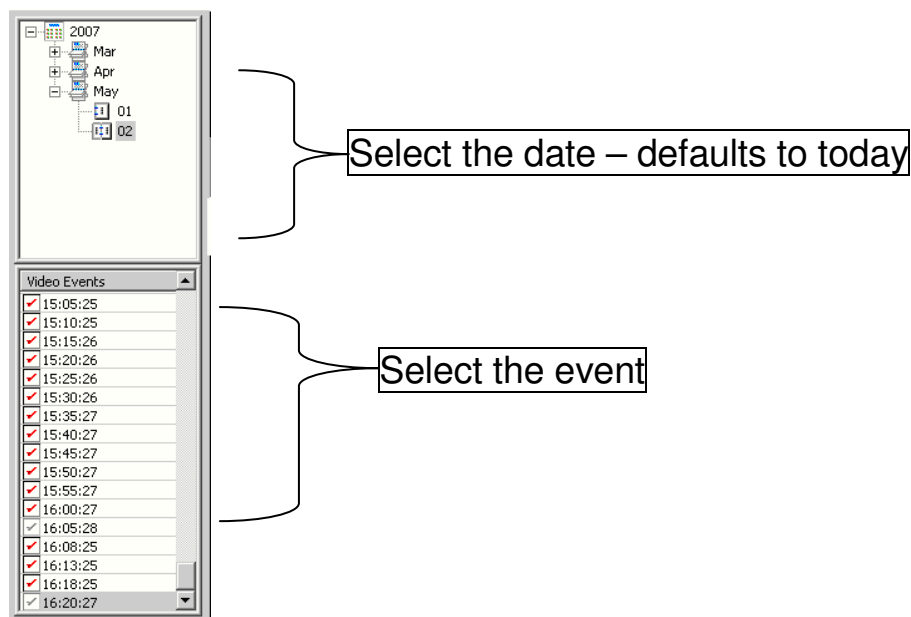


Users Manual Version 8.3

Basic Event Selection

An event is a video recording that begins when motion is detected and stops when the motion stops or 5 minutes whichever comes first. If motion continues beyond 5 minutes a new event is created and recording continues (note: there is no video lost between events).

The system defaults to showing events for today's date. If you know the time of the event click on the event with a time stamp closest to the beginning time and press the play button on the playback controls.



To control the playback use the playback controls and the quick search tool.



To select a range of events click on the first event and then go to the last event and press shift and click at the same time

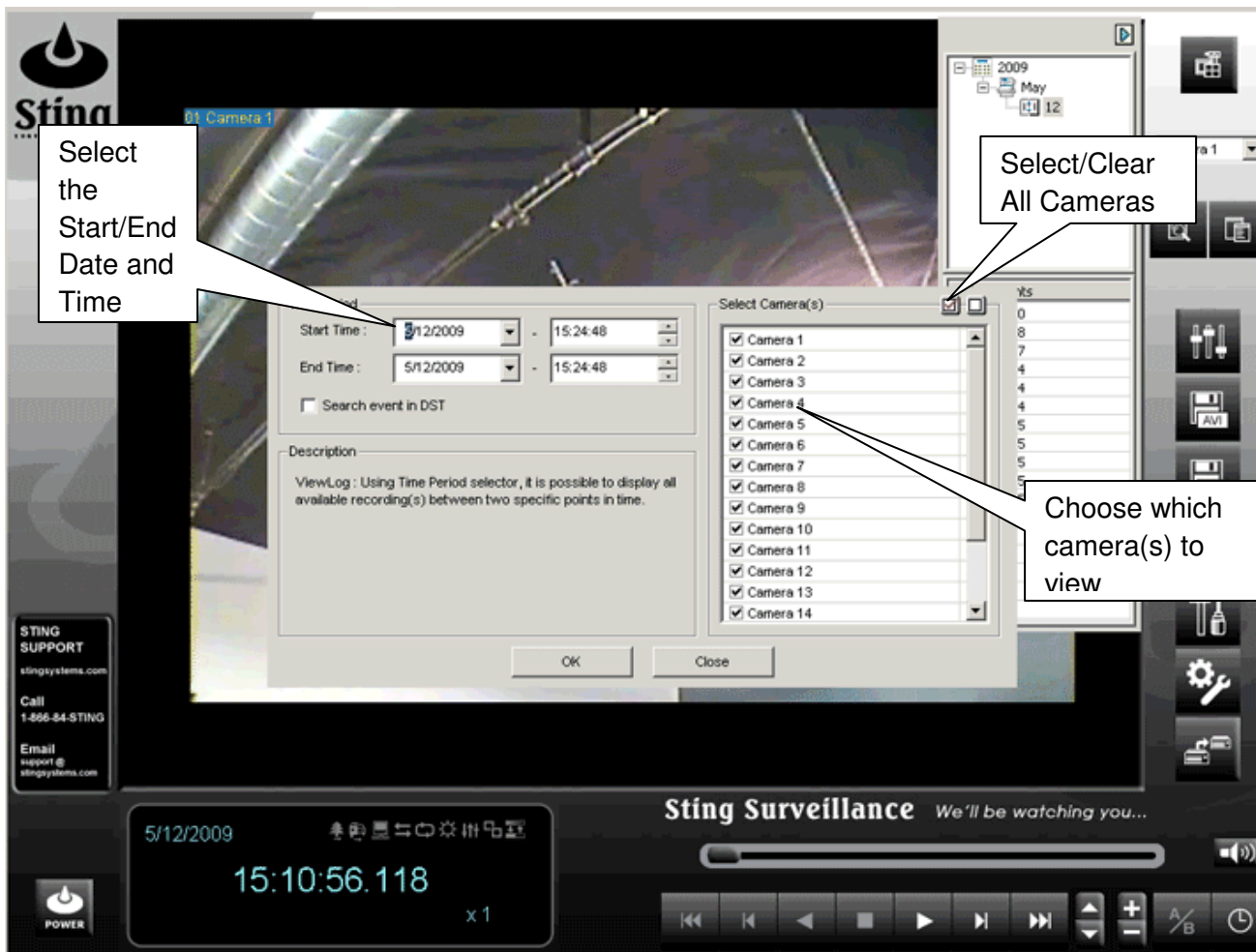
If the event that you are interested in is prior to today, click on the “+” sign next to the year, then the month and finally the day you are interested in viewing. Then select the event you are interested in. To select a range of events click on the first event and then go to the last event and press shift and click at the same time.



Users Manual Version 8.3

Advanced Search

The advanced search tool allows you to specify a specific date/time range for your search. Click on the “Advance” Search Mode button as shown below. Click on the Advanced Search(F10) to bring up the advanced search screen. Then use the playback controls to review the event.



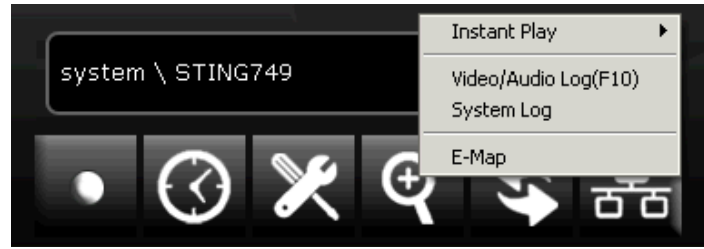


Users Manual Version 8.3

Backup

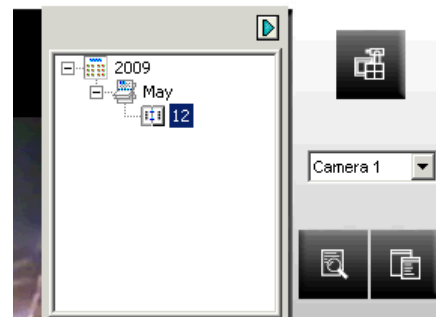
This section will show how to make a copy of an event or series of events to a CD or DVD for your internal use or use by law enforcement.

Step 1 – Select the “View Log” button. The following menu will appear:

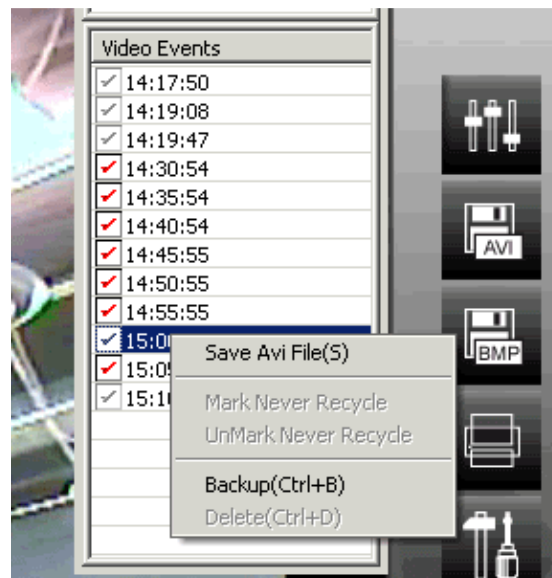


Click on “Video/Audio Log”

Step 2 – Select the date (year/ month/ date)



Then select the video event by time and right-click on it. The following menu will appear:

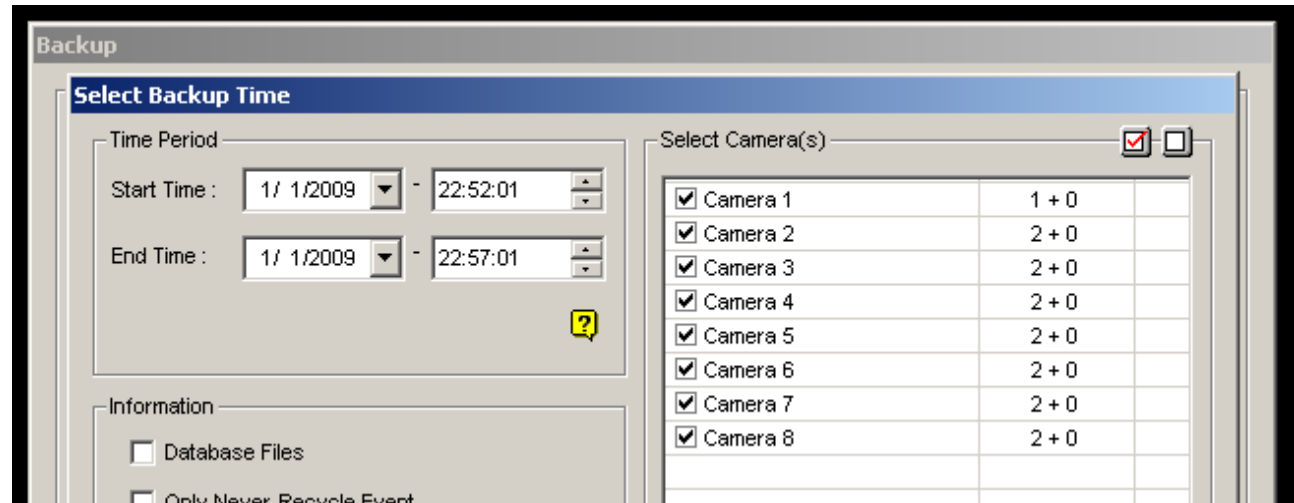


Click on Backup

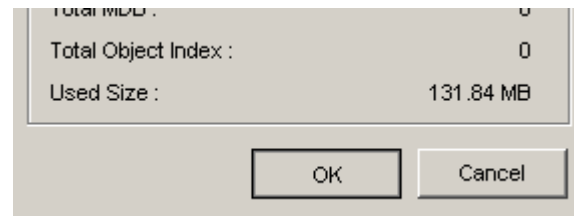


Users Manual Version 8.3

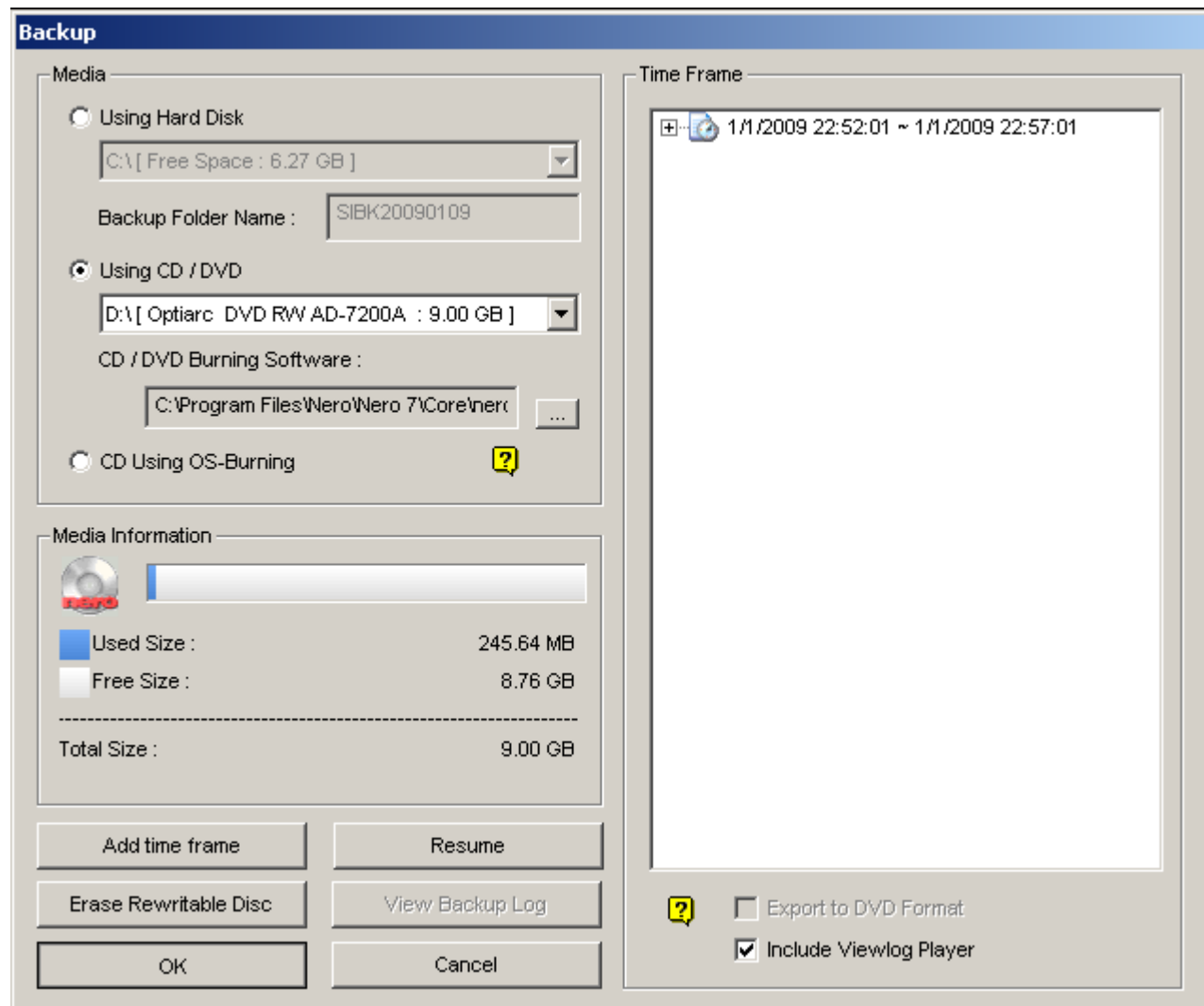
Step 4 – Verify that the times and dates listed in “Start Time” and “End Time” are listed correctly. Also make sure the cameras you wish to back up are checked in.



Once you have verified the selected time and dates, Click OK.



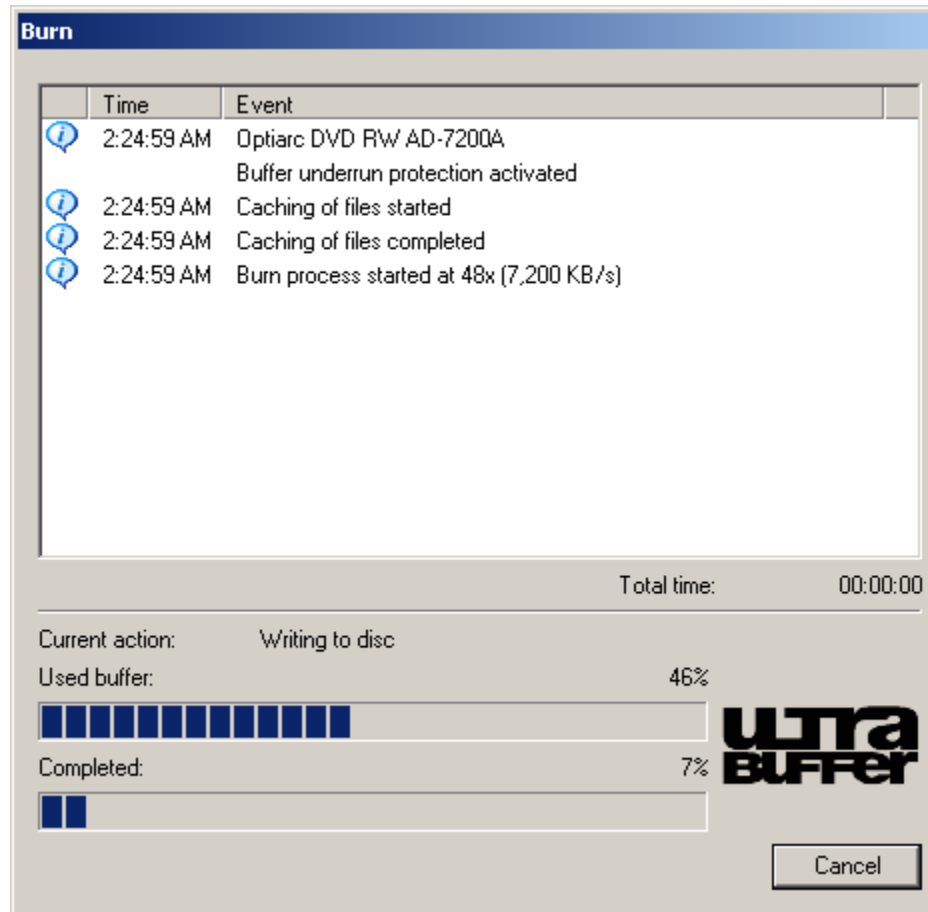
Click OK again on the following window



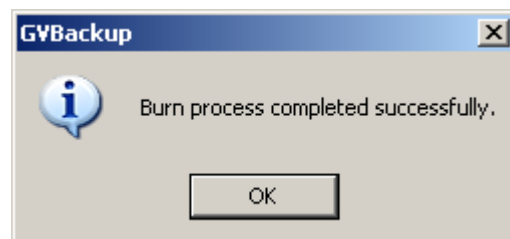


Users Manual Version 8.3

The following window will appear. This window means that the CD is currently being burned.



When burning is complete, this box will show. Click OK and the system will eject the backup disc.





Users Manual Version 8.3

Remote access via the Web

Start your web browser... If you are a Windows Vista user make sure that you are running the most current version and all software patches have been applied.

Enter the address of your DVR + the port number of the DVR you would like to connect to. By default port numbers for sting DVR's start at 8080 although any port number is possible.

i.e. <http://172.16.20.139:8080>



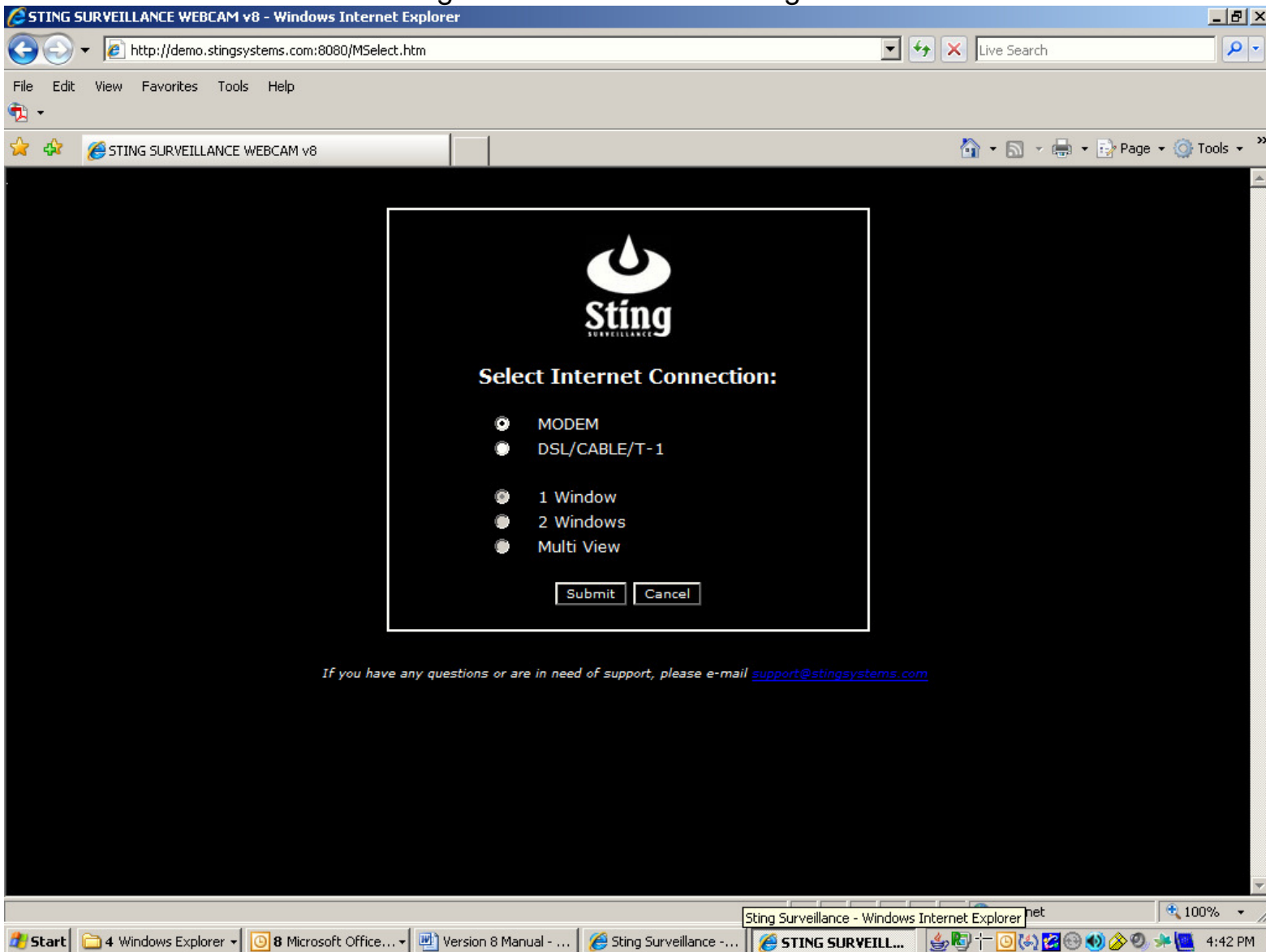
Note: There are a number of factors that will determine how smooth your video plays back. Included in this are the upstream and downstream speeds of the internet connections at both the DVR end and the location where you are using the remote viewer, as well as the quality of the networks that the connection passes through.

Insert your username and password in the prompt. (Contact 702-855-3807 if you are having trouble gaining accessing to your DVR remotely)



Users Manual Version 8.3

Choose the Multi-Cam Streaming Viewer to watch live images.



On this screen you can choose the speed of your connection to the internet so that the remote viewer can display the best possible image.

Modem for a dialup connection

DSL/Cable/T-1 or higher speed connection

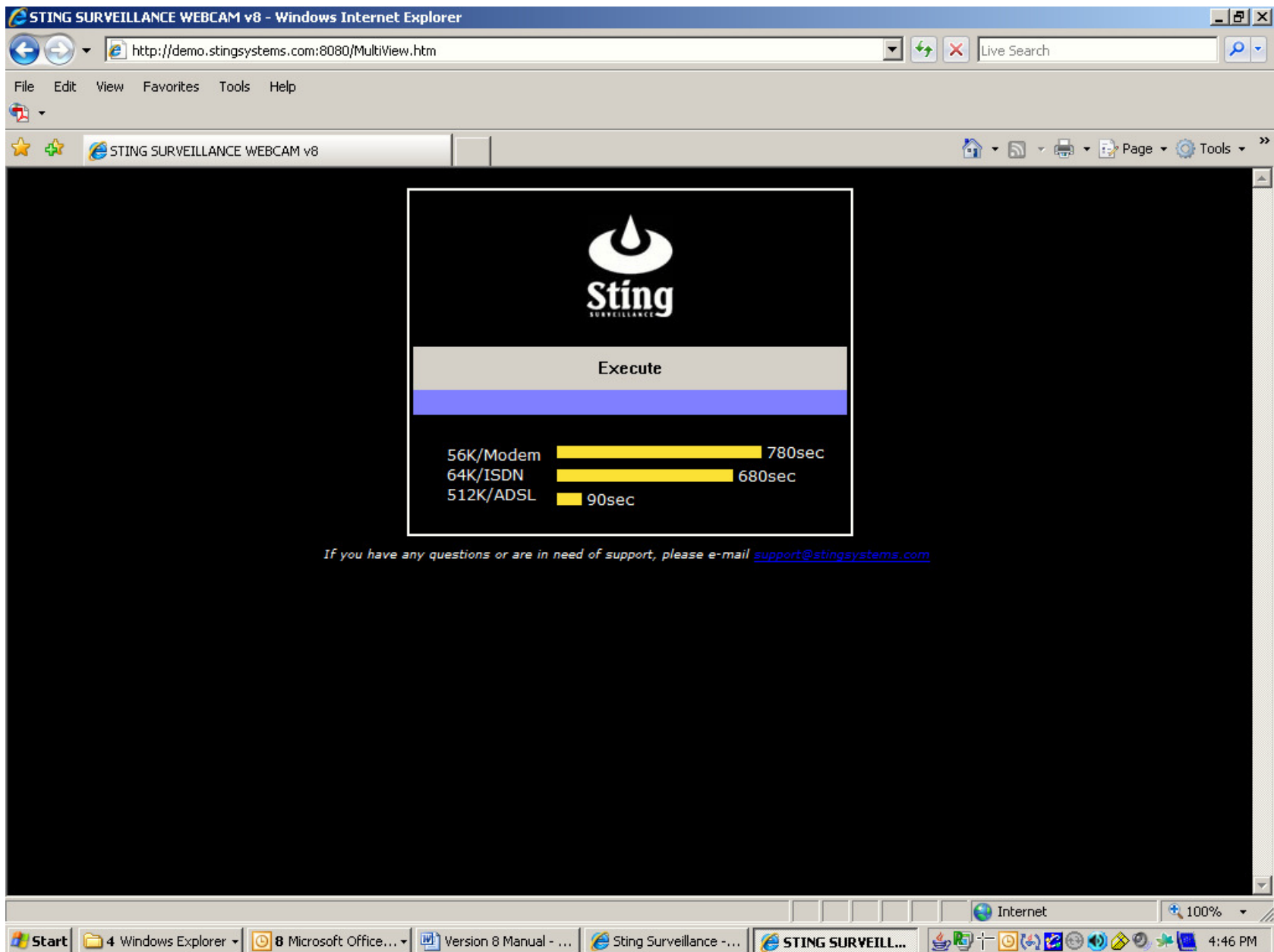
You can also choose how many cameras you would like to view at once.... The more cameras the more that speed becomes an issue for image quality and the smoothness of the playback.

Click Submit to bring up the Multi View Screen



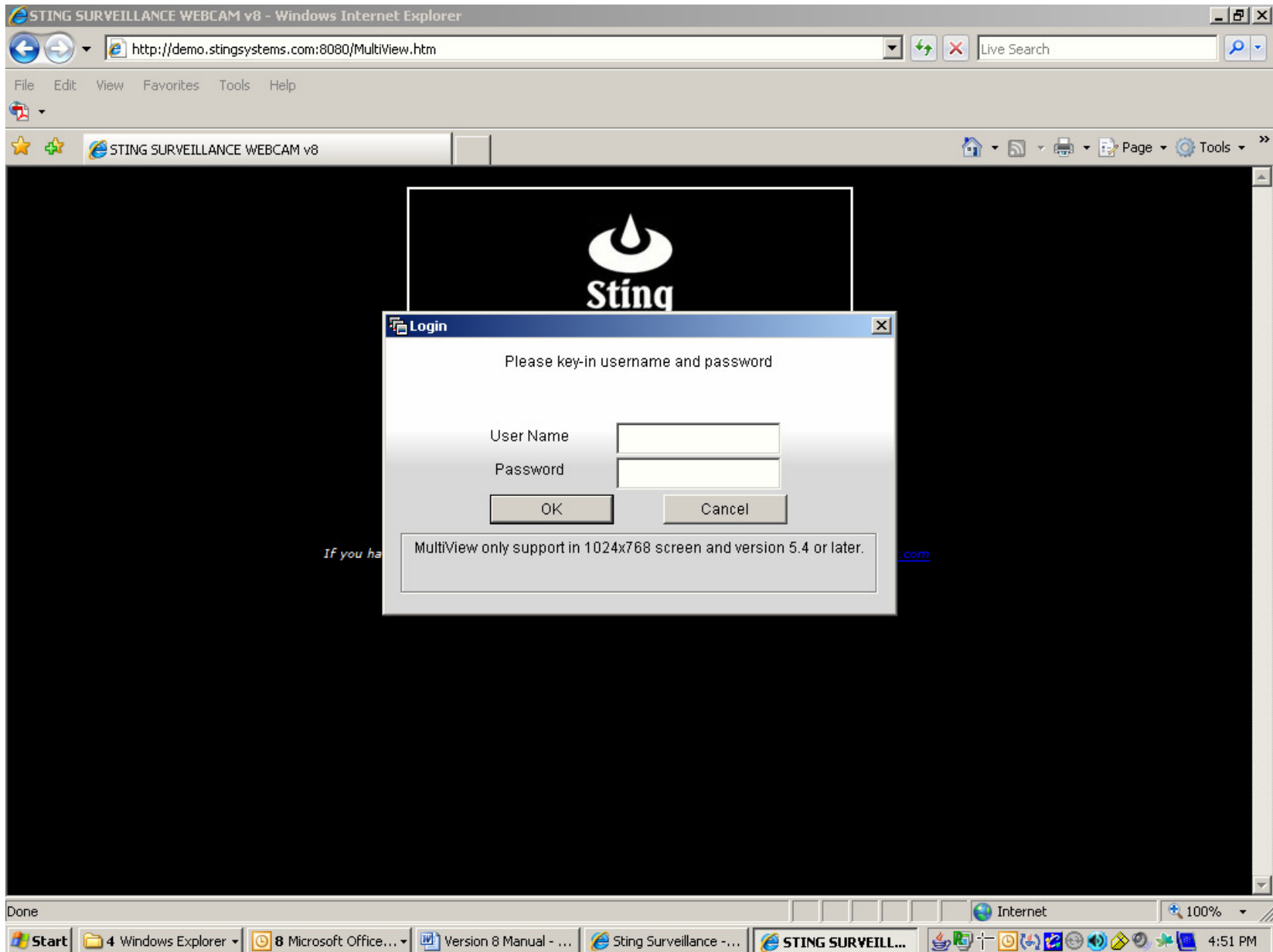
Users Manual Version 8.3

This screen will pop up to indicate how long it will take for the remote viewer to load. In the example below the multi view monitor will take over 10 minutes to load on a 56K dialup line.





Users Manual Version 8.3





Users Manual Version 8.3

The screenshot displays a video surveillance software interface. The main area is a 4x4 grid of camera feeds. The top-left cell shows a room with shelving. The top-right cell shows a person at a desk. The middle-right cell shows a white van with 'Sting' branding. The bottom-right cell shows an outdoor scene with a sidewalk. The other cells in the grid are blue with the text 'No Privilege'. Below the grid is a control panel with various icons for camera control, including zoom, pan, and play. On the right side, there is a panel with a list of devices, including 'demo.stingsys' and 'System Burnot', and a 'PLAY' button.



Users Manual Version 8.3

Customer Training Acknowledgement

Thank you again for choosing Sting for your business needs. This initial training is included in the purchase price of your system. Additional training may be arranged by contacting your sales representative or our sales department.

Company Name: _____

Customer Trained: _____

Please Initial Items if Complete

Operation

- DVR Startup
- Login
- Keylock
- Basic Monitoring
- DVR Shutdown

Event Selection and Playback

- Playback Controls and Features
- Event Selection
- Basic Search
- Advanced Search

Copy an event to CD or DVD

- Media Selection
- Selecting an event for backup
- Burning to a CD/DVD

Advanced Operation

- Changing Recording Resolution
- Block an area from motion detection
- POS Interface
- Pan Tilt Zoom (PTZ) Camera Operation

I acknowledge that I have been trained in the proper use and operation of the Sting DVR(s) that are installed at my site.

Customer Signature : _____

Date: _____